

# ACTIVATE PROSPECTUS



YSGOL  
AFON WEN  

---

Activate

Nurturing young  
minds together

NURSERY to YEAR 3

# welcome

**Croeso**  
Mrs C Crockett - Headteacher

*I am delighted to introduce you to our unique and vibrant community.*

Our prospectus aims to give you a comprehensive feel for life here at Ysgol Afon Wen, highlighting our values, aspirations, and the dynamic environment we foster for both pupils and staff. I am pleased to welcome you to the prospectus of our new All Age School - Ysgol Afon Wen, which will serve the children in our community from September 2024.

At Ysgol Afon Wen, we are committed to nurturing the potential within every pupil. Our Triple AAA Promise will inspire and ignite the learning spark by activating learning, advancing curiosity, and achieving success. Through this promise, we will create an environment where every pupil can flourish.

Choosing the right school for your child is a significant decision, and we understand the weight of this choice. Your child's happiness and success are paramount, and we are committed to providing a balanced environment to ensure these outcomes. We are committed to offer an outstanding education that gives every child who joins us the best possible start in life. We strive to be the best school for your child, working tirelessly to help them develop into well rounded individuals prepared for the next stages of their lives.

Our school is not the creation of a large primary and secondary school on one site, but the development of a truly inclusive 3 to 16 learning community. We are creating an all-age school ethos by embracing the best aspects of innovative practice and providing excellent teaching and learning for all our pupils.



Children have one chance at education, and they deserve the best. Our role is to ensure they receive it. We maintain the highest expectations for our pupils and ourselves, constantly seeking to improve the quality of education we provide. We value the partnership with pupils, staff, and parents, working together to achieve our shared goals - together!

*I am very much looking forward to working with you and your child to ensure they become respectful, resourceful and successful young people in the future.*



YSGOL  
**AFON WEN**  
Activate

Proud of  
our history,  
confident  
in **our future**

# why choose Ysgol Afon Wen

## Why opt for an all age school?

- All Age schools come in various forms, including different layouts, staffing structures, and age ranges.
- At Ysgol Afon Wen, we operate as a single school with pupils aged 3-11 and 11-16 on one site.
- Our core values are consistent throughout the school, fostering a unified environment.
- Our staff work as one cohesive team, sharing professional development and learning experiences with pupils across Activate, Advance and Achieve phases.
- Teachers at Ysgol Afon Wen, have the opportunity to teach different year groups, promoting collaboration and a diverse learning experience for both pupils and educators.

## Key Staff - Activate Phase

Mrs K Connor - Associate Assistant Headteacher ACTIVATE  
Mrs N Rowland - Progress Leader for Nursery to Year 3





# vision, values & ethos

At Ysgol Afon Wen, we are committed to nurturing the potential within every pupil. Our **Triple AAA Promise** will inspire and ignite the learning spark by activating learning, advancing curiosity, and achieving success. Through this promise, we are dedicated to creating an environment where every pupil can flourish.

We aim to engage minds with innovative and dynamic educational experiences. Our curriculum is designed to challenge and inspire, encouraging exploration and fostering a lifelong passion for knowledge. At Ysgol Afon Wen, learning is an adventure, and we strive to make every moment a step towards greater understanding and personal growth.

By empowering individuals to reach their full potential, we ensure that our community shines brightly, now and in the future. We believe that every pupil has unique strengths and abilities, and our goal is to help them discover and develop these talents.

Our supportive and inclusive environment ensures that every member of our community feels valued and motivated to succeed.

To achieve our **Triple AAA Promise**, we ensure five core values are at the heart of our work:



## Importance of Early Learning in Activate Phase

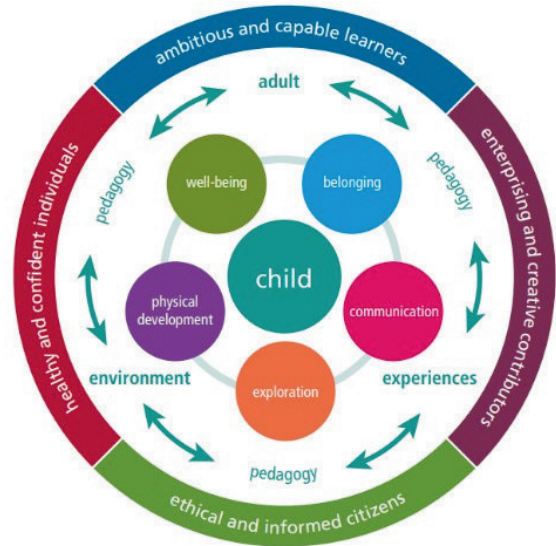
### Nursery and Reception

Our Activate phase comprises of **Nursery, Reception, Year 1, Year 2, and Year 3** pupils. Our nursery will operate morning sessions, moving to full-time the first term after their fourth birthday.

In the Activate Phase, we place significant importance on the early years of learning, recognising the critical role these years play in laying the foundation for future educational success.

At Ysgol Afon Wen, our curriculum is underpinned by the five developmental pathways to support pupil progression in Nursery and Reception classes.

- Belonging
- Communication
- Exploration
- Physical development
- Wellbeing



# activating learning Nursery to Year 3

The learning period in Nursery and Reception, acts as a gateway to understanding and mastering the six areas of learning and experience in Years 1, 2 and 3 by establishing the essential foundations for our pupils' future success.

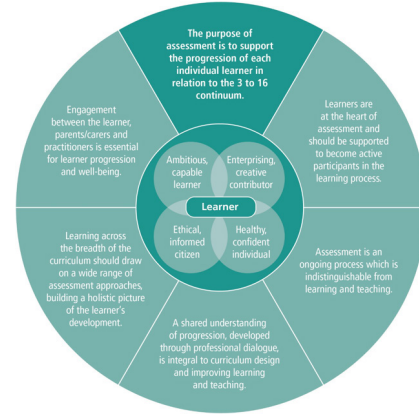
Every morning pupils in Years 1 - 3 have lessons in Literacy, Spelling and Handwriting, Numeracy, Guided Reading, and Welsh. The afternoon sessions provide opportunities for learning in the other Areas for Learning and Experience.

Each week there will be lessons in Humanities, Science and Design Technology, Expressive Arts, Wellbeing, and Computing. Every pupil has two hours of Physical Education each week.

Every day finishes with reflection time, where teachers and adults share stories with the pupils.

Six Areas of Learning and Experience

- Mathematics and Numeracy
- English, Literacy, and Communication
- Humanities and Religion, Values, and Ethics
- Wellbeing
- Science and Technology (STEM)
- Languages



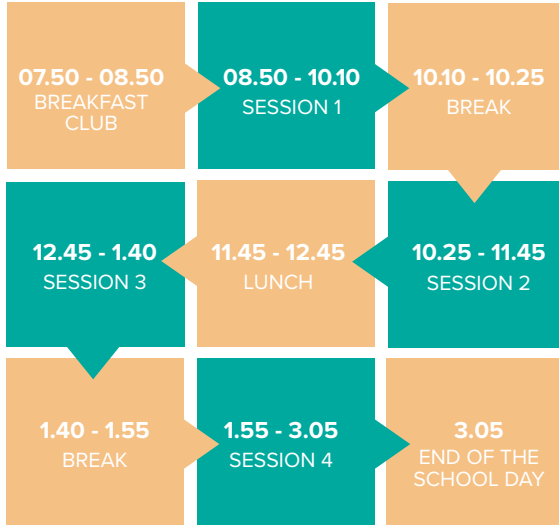
## Outdoor Learning in the Activate Phase

Much of the Activate curriculum is conducted outdoors. The school has an abundance of green spaces. All staff are committed to providing a safe, secure, and stimulating environment.

- Pupils have opportunities to explore, discover, and appreciate the natural world.
- Encourages pupil physical activity, helping to strengthen fine and gross motor skills.
- Allows pupils to test physical limits, engage in hands-on learning.

# our school day

## Activate Nursery to Year 3



Pupils are not allowed to leave school during the school day without permission.

# attendance

At Ysgol Afon Wen, we expect all pupils to have 95% or more attendance. When children attend school consistently, they are more likely to do well with their studies but also build strong relationships and feel connected with the school community.

It is vitally important that your child's absence is reported to us on the first day of absence and each subsequent day of absence unless there has been medical authorisation for a period of absence granted on day one. Absences should be reported via the school office.

Medical evidence is required to authorise absences.

# beyond the curriculum expanding horizons

## Extensive Opportunities:

We provide pupils with numerous opportunities beyond the standard curriculum through a variety of extra-curricular clubs. These clubs allow pupils to explore new interests and develop diverse skills. In our Activate Phase, these clubs include:

- Sport
- Technology
- Expressive Arts
- Sciences

## Emphasis on Reading:

We prioritise reading because it has a profound impact on educational outcomes. Pupils who read frequently achieve higher levels of success. Our approach to teaching reading is highly effective, ensuring that our children develop strong reading skills that benefit them throughout their lives.

## House System

Our House system fosters friendly competition and a school community spirit through a range of activities. In our Activate Phase, these activities include:

- Sport
- Dancing
- Baking
- Poetry
- Karaoke

## Curricular Enrichment through Trips:

We enhance our curriculum with exciting trips that enrich classroom learning. In the younger years, these trips are local, gradually expanding to more distant locations as pupils progress through our school.





# additional learning needs ALN

The Welsh Government is dedicated to enhancing the expectations, experiences, and outcomes for children and young individuals with additional learning needs. To achieve this goal, they have introduced the Additional Learning Needs (ALN) Act, aimed at revamping the existing systems for Special Educational Needs (SEN) within schools. Ysgol Afon Wen, like all educational institutions in Wales, has embraced the ALN Act.

Ysgol Afon Wen upholds inclusive principles and provides a range of services to cater to every pupil's unique requirements. Pupils with Additional Learning Needs are integrated into mainstream classes and mixed-ability groups, where they may receive supplementary support from our instructors. The class teacher is informed about any additional learning needs present in the class and tailors instruction accordingly. Depending on the complexity of the needs and required interventions, pupils may access support during classes or through specialised sessions.

Ensuring equitable treatment for employees, pupils, and all members of the school community is a core value at Ysgol Afon Wen. We are committed to preventing any form of discrimination against individuals in our procedures, practices, or service provision.

Our accessibility plan is available on the school's website under the policy section.





# Our uniform Nursery to Year 3

## What uniform do our pupils need to wear

UNIFORM ITEM	PLEASE PURCHASE FROM
<b>COMPULSORY ITEMS</b>	
White Polo Shirts (badged)	Any Supplier / Badged - MST Sports Ltd and The Welsh Shop
Navy Jumper / Cardigan (badged)	Any Supplier / Badged - MST Sports Ltd and The Welsh Shop
Dark Grey Trousers / Skirts / Pinafores	Any Supplier
Dark Grey Tailored Shorts	Any Supplier
Yellow Gingham Dress (Nursery to Year 6)	Any Supplier
Plain Black Shoes	Any Supplier
PE Black Top (Badged)	Any Supplier / Badged - MST Sports Ltd and The Welsh Shop
Black PE Joggers / Shorts / Leggings	Any Supplier
PE Sport Top - Top Layer	Any Supplier / Badged - MST Sports Ltd and The Welsh Shop
<b>OTHER UNIFORM INFORMATION</b>	
<ul style="list-style-type: none"> <li>● Hoodies are not allowed in school.</li> <li>● Pupils may wear one small plain stud earring. Please do not wear any facial piercings to school. All piercings must be able to be removed during the school day.</li> <li>● Make up should be minimal / natural and please do not allow false nails to be worn to school.</li> </ul>	
<b>FOR EMBROIDERY ITEMS</b>	
<ul style="list-style-type: none"> <li>● MST Sports Ltd - 6 Windsor Place, Ynysybwl, Pontypridd CF37 3HR</li> <li>● The Welsh Shop - Unit B1, Taffsmead Rd, Treforest Ind Est, Pontypridd CF37 5TF</li> </ul>	

# arriving and departing school

As a school, we promote and support sustainable modes of transportation within our school community. By encouraging walking, cycling, and the use of public transportation, we aspire to enhance the wellbeing of our pupils and reduce our environmental impact.

## Entering the school site

- Pupils will enter site via the main pupil entrance (Year 7 to Year 11)
- Pupils will enter via the Activate/Advance yard (Year 3 to Year 6)
- Pupils will be met by their class teacher at the classroom door (Nursery to Year 2)

## By Car:

There are available parking facilities onsite, however these are limited. At all times we would encourage families to participate in active travel where possible. We operate a restricted system onsite in the mornings and afternoons to ensure the safety of our pupils. Staff will not release your child until you arrive to collect them. Please do not worry if you are running a few minutes late.

If you expect to arrive later than five minutes, please can you get in touch with a member of the school team.

Learning starts at 08:50 and we expect all children to be in class and ready for their new day of exciting learning activities. You can drop children off from 08:40 onwards.

## By School Transport:

We operate restricted movement at both ends of the day. Families should be mindful of this when dropping / collecting their child to school.



**YSGOL  
AFON WEN**  
Activate

# Nurturing young minds together

**YSGOL AFON WEN 3-16 SCHOOL**  
**NURSERY to YEAR 3**

School Lane, Hawthorn, Pontypridd CF37 5AL

Telephone: **01443 841228**

Email: **admin@ysgolafonwen.rctcbc.cymru**